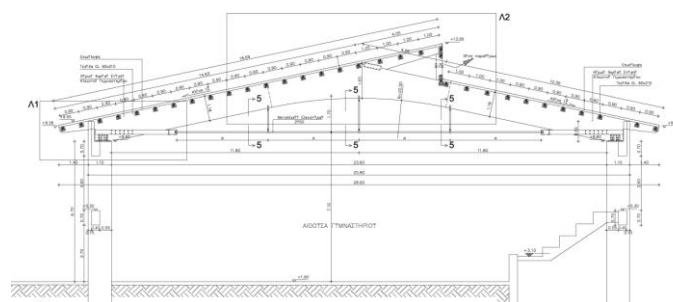
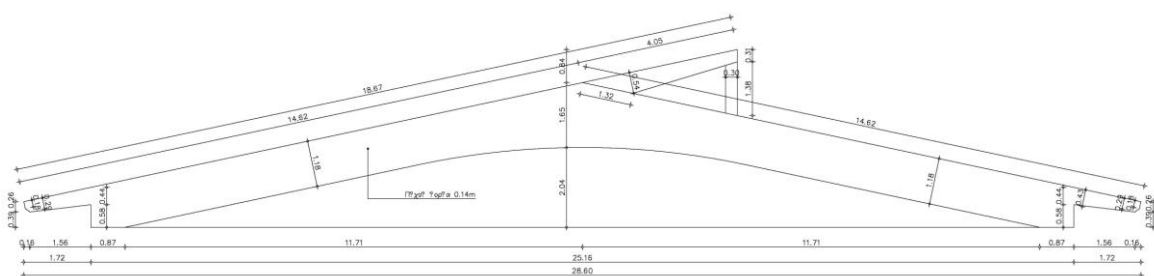


GeoStatic acting as a technical consultant supports the timber sub-contractor to bid for the construction of an integral timber roof made by glue laminated wood based on the reinforced concrete columns. The roof has a clear span of 28.00m with an integral beam of boomerang type, without any connections, erected in a site with great constraints due to lack of space.

Our services are focused on the followings:

- i) Checking of the technical documentation of the project (structural plans, calculations, specifications).
- ii) Collection of some offers for the related products and after a price reviewing, based on a concise cost-benefit analysis, we make suggestions to the sub-contractor.
- iii) Preparation of the final bidding documents.



Structural design by Hellenic Organization of Schools